



TREPPEN UND FAHRSTEGE
TREPPEN

MP|SIERRA

MP SIERRA 302, MP SIERRA 303, MP SIERRA 304,
MP SIERRA 352, MP SIERRA 353, MP SIERRA 303*
SIERRA 304*

Rolltreppen für U-Bahn-Stationen,
Bahnhöfe und ähnliche.

Hinsichtlich Anpassungsfähigkeit ein Schritt voraus

	MP SIERRA 302	MP SIERRA 303	MP SIERRA 304	MP SIERRA 352	MP SIERRA 353	MP SIERRA 303*	MP SIERRA 304*
a	30°	30°	30°	35°	35°	30°	30°
Upper radius	1500	1500	1500	1500	1500	2700	2700
AA	2231	2631	3031	2266	2666	2863	3263
BB	2598	2998	3398	2682	3082	3283	3683
CC	Hx1,732	Hx1,732	Hx1,732	Hx1,428	Hx1,428	Hx1,732	Hx1,732
DD	2370	2770	3170	2505	2905	3000	3400
EE	2815	3215	3615	2780	3180	3500	3900
FF	4530	4930	5330	4420	4820	5160	5560
JJ	870	870	870	850	850	870	870
MM	1060	1060	1060	1080	1080	1060	1060
KK	8000	8400	8800	7200	7600	8800	9220

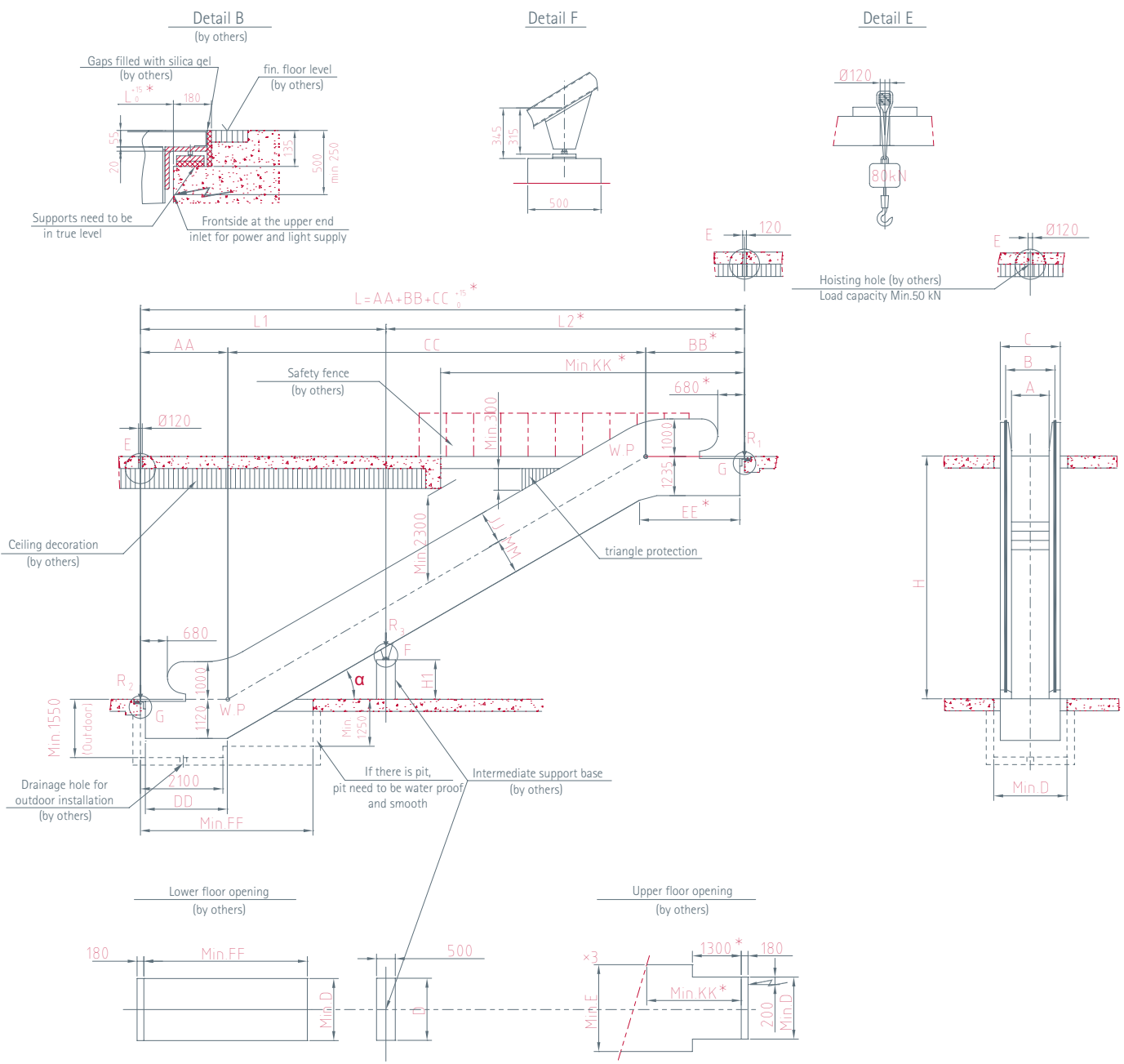


A	REAKTION (KN)	
	Without intermediate support	With one intermediate support
600	R1=4,05xL+16,3	R1=4,05xL2+14
	R2=4,05xL+8,5	R2=4,05xL1+7
800	R1=4,45xL+17	R1=4,45xL2+16
	R2=4,45xL+9,5	R2=4,45xL1+7,5
1000	R1=4,95xL+19,5	R1=4,95xL2+17,2
	R2=4,95xL+10,5	R2=4,95xL1+8,3
		R3=5,2xL+11,3

Notes:
1. L, L1 und L2 are in meters
2. L1 and L2 do not exceed 15 metres

VERTIKALE BALUSTRADE				
A	B	C	D	E
600	837	1195	1270	1790
800	1037	1395	1470	1990
1000	1237	1595	1670	2190

GENEIGTE BALUSTRADE				
A	B	C	D	E
600	910	1195	1270	1790
800	1110	1395	1470	1990
1000	1310	1595	1670	2190



- NOTES:
1. Height above sea level of the escalator place should not be higher than 1000m. In case of doubt, please contact MP.
 2. If one of the following situations, the dimensions marked with * shall be extended 500mm:
 (1) 600 mm step width
 (2) Double drive
 (3) VVVF
 3. Client should provide the intermediate support base, which can be made of reinforced concrete or metallic structure in right position, in case of horizontal distance L higher than 15 m.
 4. The requirements of escalators and building interfaces must be according with the national standards (EN115-1:2008+A1:2010). In case of doubt, please contact MP.