



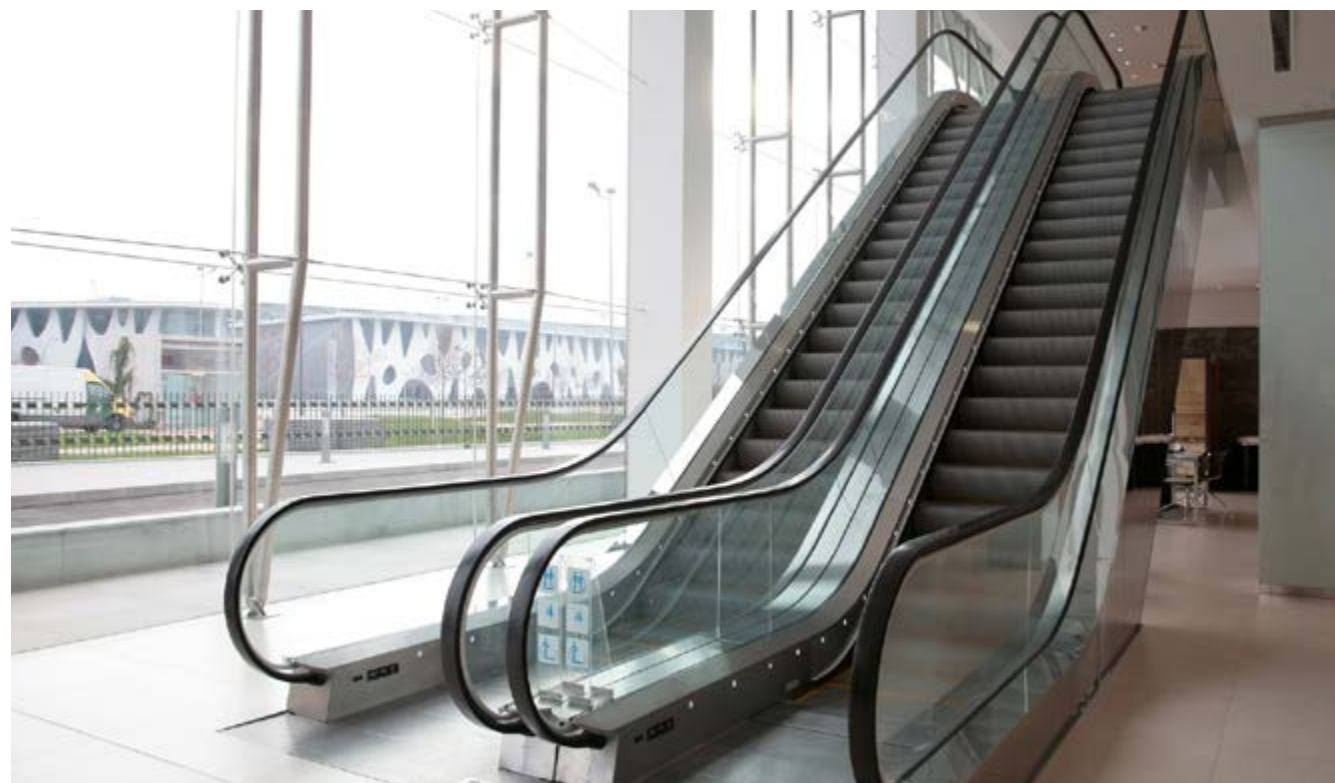
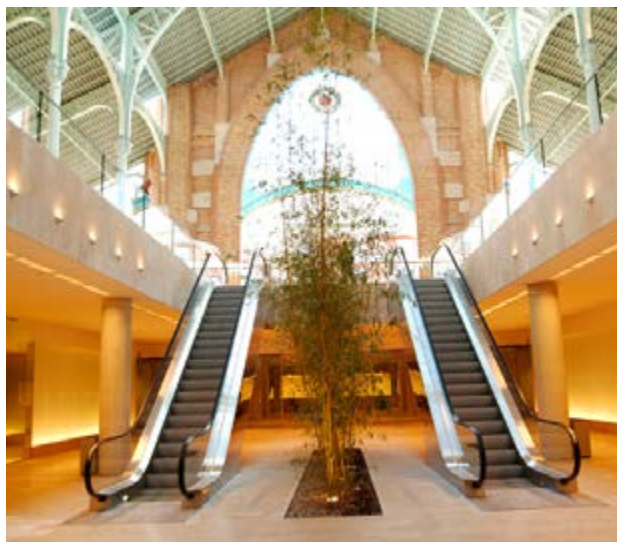
TREPPEN UND FAHRSTEGE
TREPPEN

MP|COLINA

MP COLINA 302, MP COLINA 352, MP COLINA 303

Rolltreppen für Einkaufszentren, Kaufhäuser, Supermärkte,
Hotels, Bürogebäude, Museen, Krankenhäuser und
Flughäfen.

Anpassungsfähigkeit und optimale Ausführung

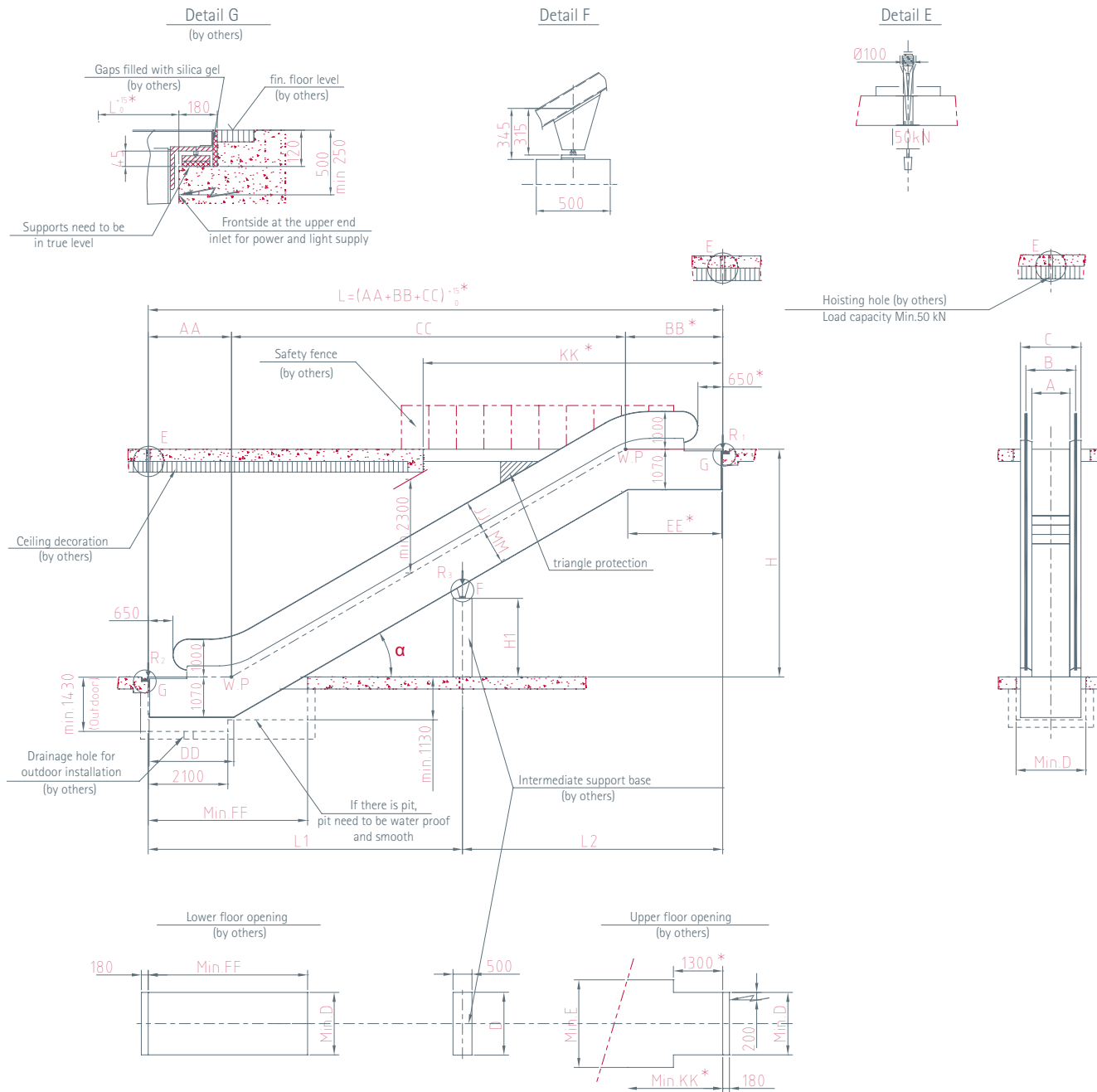


	MP COLINA 302	MP COLINA 352	MP COLINA 303
a	30°	35°	30°
AA	2195	2229	2595
BB	2449	2510	2964
CC	Hx1,732	Hx1,428	Hx1,732
DD	2230	2385	2630
EE	2355	2312	2870
FF	4200	4000	4600
JJ	870	850	870
KK	7800	7000	8300
MM	960	980	960

A	REACTION FORCE (KN)	
	Without intermediate support	With one intermediate support
600	$R1=3,35xL+15,5$	$R1=3,35xL2+11,5$
	$R2=3,35xL+10$	$R2=3,35xL1+4,5$
800	$R1=3,7xL+17$	$R1=3,7xL2+12$
	$R2=3,7xL+11$	$R2=3,7xL1+4,7$
1000	$R1=4,15xL+18,5$	$R1=4,15xL2+12,5$
	$R2=4,15xL+11,5$	$R2=4,15xL1+4,9$
		$R3=4,15xL+4,5$

Note: L, L1 and L2 are in meters

VERTICAL / INCLINED BALUSTRADE				
A	B	C	D	E
600	837	1145	1200	1720
800	1037	1345	1400	1920
1000	1237	1545	1600	2120



NOTES:

1. Height above sea level of the escalator place should not be higher than 1000m. In case of doubt, please contact MP.
2. If one of the following situations, the dimensions marked with * shall be extended 500mm:
 (1) 600 mm step width
 (2) Double drive
 (3) VVVF and power exceeds 11kW.
3. Client should provide the intermediate support base, which can be made of reinforced concrete or metallic structure in right position, in case of horizontal distance L higher than 15 m.
4. The requirements of escalators and building interfaces must be according with the national standards (EN115-1:2008+A1:2010). In case of doubt, please contact MP.