

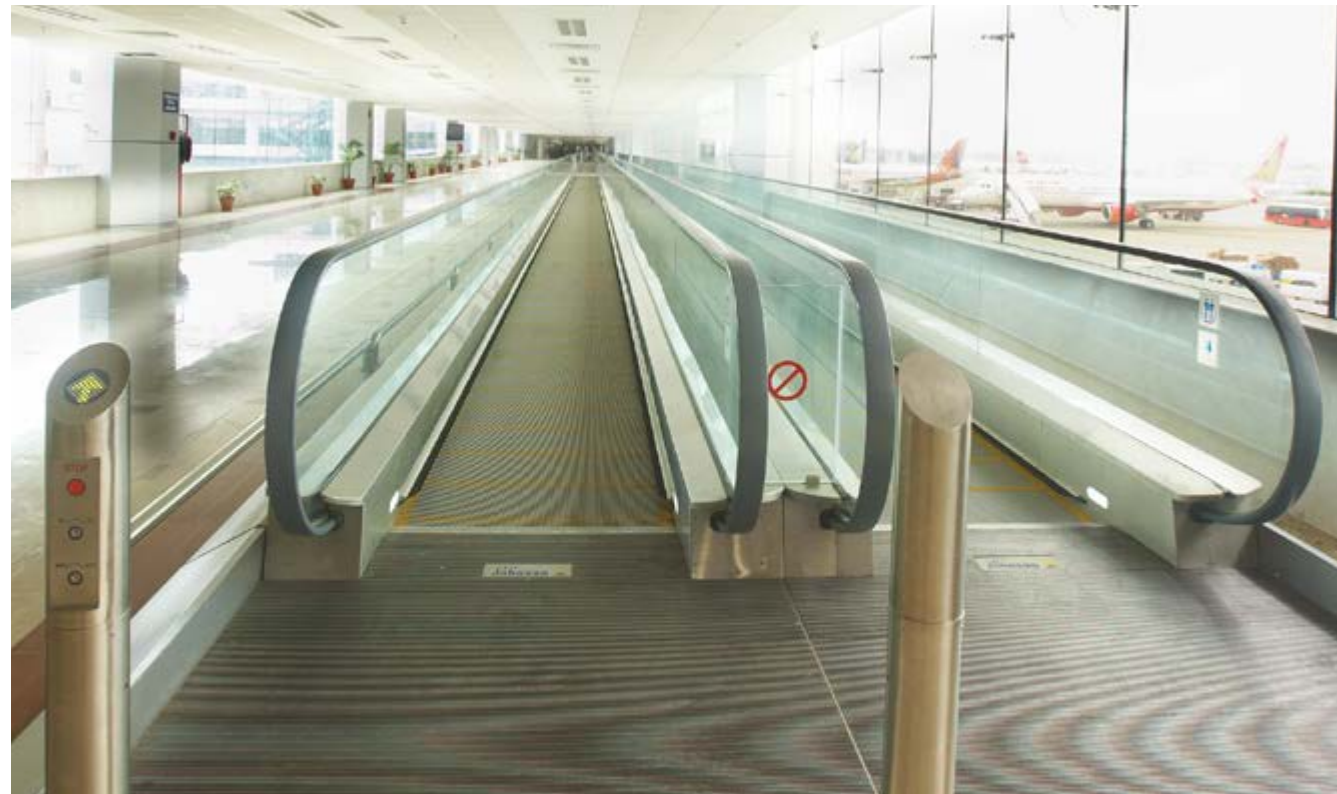


TREPPEN UND FAHRSTEIGE  
FAHRSTEIGE

**MP|PONT H**

Horizontale Fahrsteige für Flughäfen und  
Personenverkehr auf großen Distanzen.

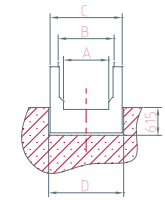
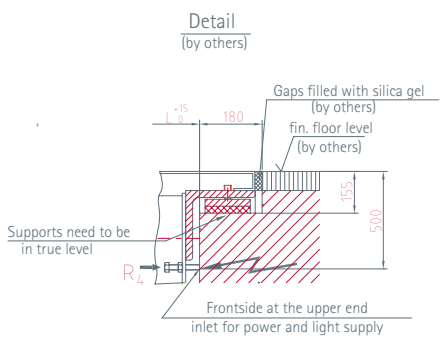
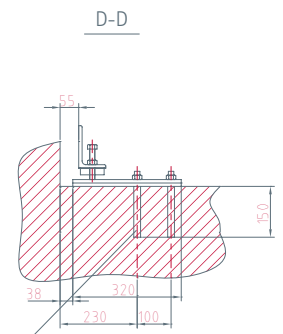
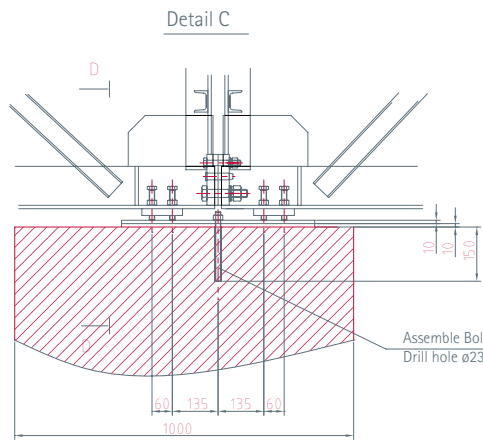
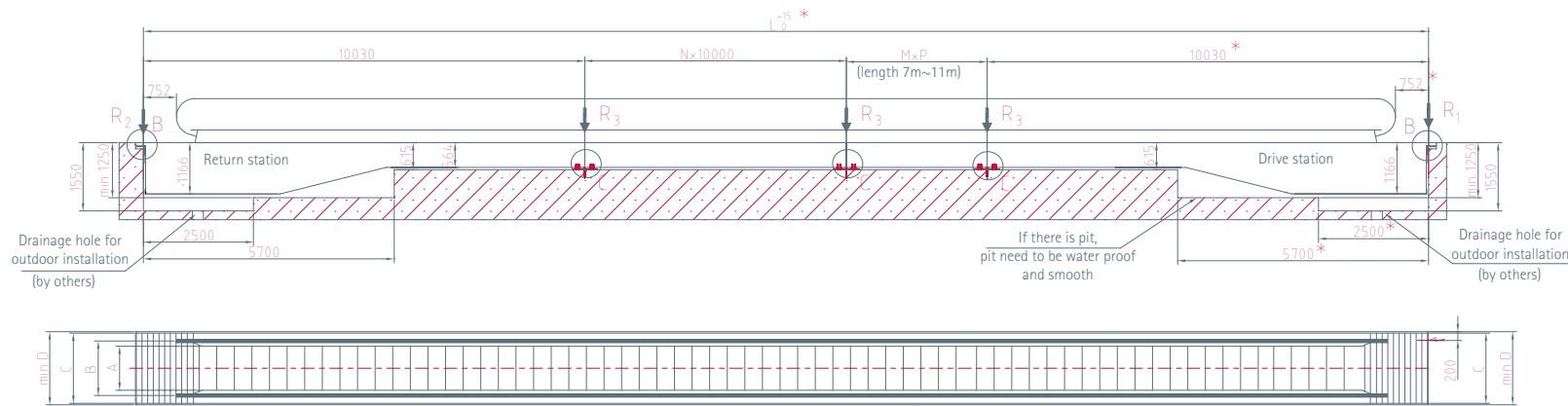
Pure Bewegungstechnologie.



A	1400	1200	1000
REAKTION (KN)			
R1	73	64	55
R2	69	61	53
R3	125	110	90
R4	5	5	5

VERTIKALE BALUSTRADE			
A	B	C	D
1000	1237	1595	1670
1200	1437	1795	1870
1400	1637	1995	2070

GENEIGTE BALUSTRADE			
A	B	C	D
1400	1710	1995	2070
1200	1510	1795	1870
1000	1310	1595	1670



NOTES:

1. Height above sea level of the escalator place should not be higher than 1000m. In case of doubt, please contact MP.
2. If one of the following situations, the dimensions marked with \* shall be extended 500mm:
  - (1) Double drive
  - (2) VVVF
3. Client should provide the intermediate support base, which can be made of reinforced concrete or metallic structure in right position, in case of horizontal distance L higher than 10m.
4. The requirements of escalators and building interfaces must be according with the national standards (EN115-1:2008+A1:2010 ). In case of doubt